




# ARIA II

Fan coil units



WATER



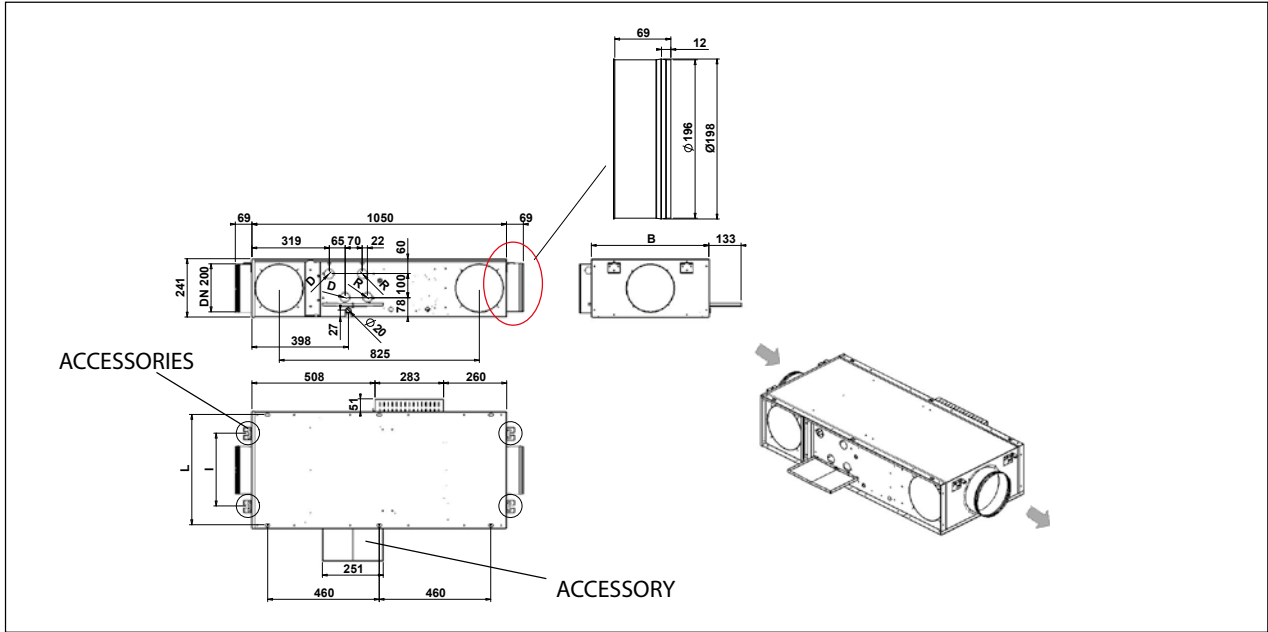
 **1,3 - 6,6 kW**  
 **1,79 - 8,53 kW**  
 **290 - 1080 m<sup>3</sup>/h**

# ARIA2<sup>(A)</sup> S<sup>(B)</sup> 4<sup>(C)</sup> 1<sup>(D)</sup> 3<sup>(E)</sup> 11<sup>(F)</sup> L<sup>(G)</sup>

- (A) ARIA2 = Unit Lennox
- (B) Low noise unit
- (C) 4 = pipe version version - 2 pipe version
- (D) Size of the unit - 1 - 2
- (E) Number of rows
- (F) Airflow configuration
- (G) Connection side - R = Right - L = Left

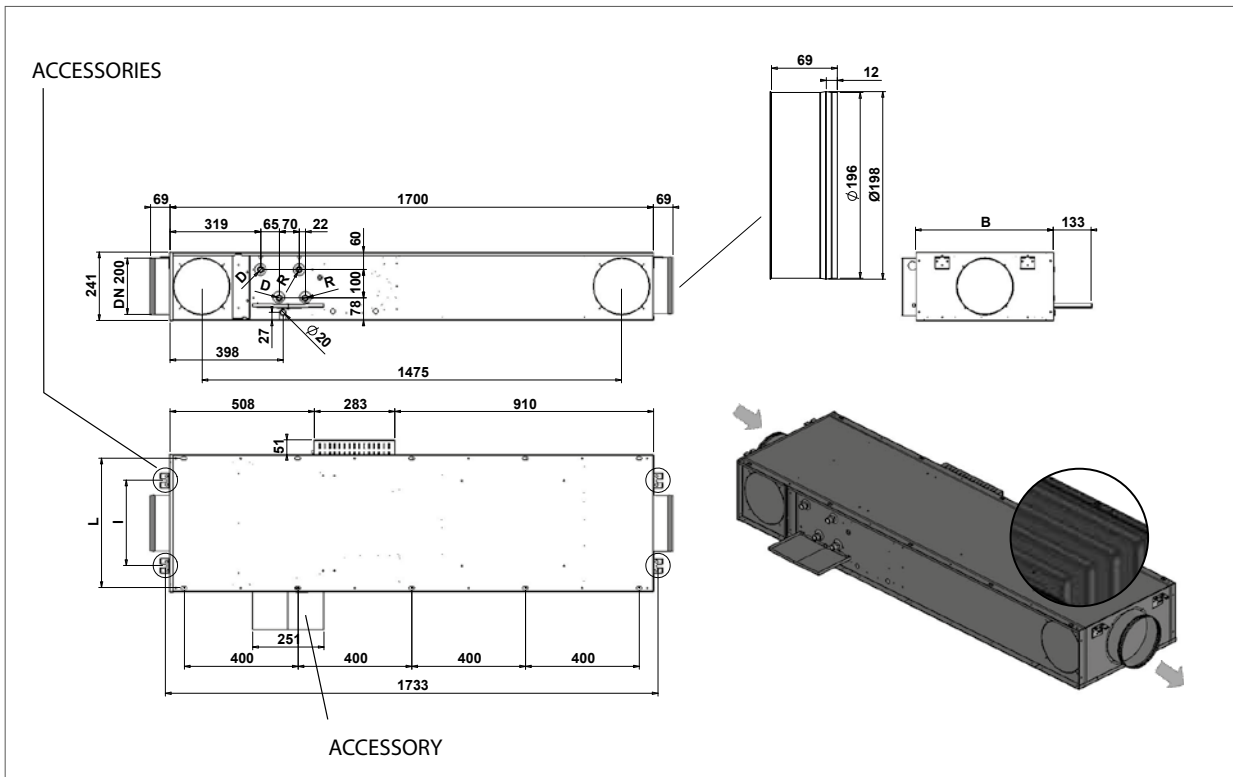
ARIA II 2 PIPES			SPEED	213	216	223	226	
<b>Nominal thermal performances - Cooling mode</b>								
Ranks		n°		3R	6R	3R	6R	
* COOLING MODE	Water inlet temperature.: 7°C Water outlet temperature.: 12°C Air inlet temp.: 27°C DB / -19°C WB	Total cooling capacity	W	Max	1760	2850	4270	6620
			Med	1550	2430	3810	5730	
			Min	1300	1940	3270	4740	
		Sensible cooling capacity	W	Max	1520	2200	3540	5030
			Med	1300	1830	3090	4280	
			Min	1060	1430	2580	3470	
	Water flow rate	l/h	Max	302	490	734	1138	
		Med	226	418	655	984		
		Min	223	334	563	815		
	Water pressure drop	kPa	Max	6	9	20	10	
		Med	5	7	17	8		
		Min	4	5	13	6		
<b>Nominal thermal performances - Heating mode</b>								
HEATING MODE	Air temperature.: 20°C Water inlet temp.: 50°C	Heating Capacity	W	Max	2540	3750	5940	8530
			Med	2190	3110	5190	7250	
			Min	1790	2420	4360	5860	
	Water flow rate	l/h	Max	302	490	734	1138	
		Med	266	418	655	984		
		Min	223	334	563	815		
	Water pressure drop	kPa	Max	7	10	16	11	
		Med	5	8	14	8		
		Min	4	5	10	6		
<b>Ventilation data</b>								
Air flow rate	m <sup>3</sup> /h	Max	490	480	1090	1080		
		Med	390	380	890	880		
		Min	290	280	690	680		
Static pressure	Pa	Max	76	65	75	65		
		Med	50	50	50	50		
		Min	27	27	30	30		
<b>Acoustic data</b>								
Sound power level aspiration + radited	dB(A)	Max	63	63	67	67		
		Med	60	60	65	65		
		Min	52	52	62	62		
Sound power level Flow	dB(A)	Max	61	61	66	66		
		Med	58	58	63	63		
		Min	48	48	60	60		
<b>Electrical data</b>								
Signal voltage	Volt	-	10	10	9,5	10		
Fan power max	W	-	64,50	61,30	151,00	155,70		
Signal voltage	Volt	Max	10,0	10,0	9,5	10,0		
		Med	8,30	8,90	7,80	8,90		
		Min	6,10	6,60	6,00	6,90		
<b>ARIA II 4 PIPES</b>			<b>SPEED</b>	<b>413</b>	<b>416</b>	<b>423</b>	<b>426</b>	
Ranks (main coil)	n°	-	3R	6R	3R	6R		
Ranks (auxiliary coil)	n°	-	2R	2R	2R	2R		
HEATING MODE	Air temperature.: 20°C Water inlet temp.: 70/60°C	Heating Capacity	W	Max	3190	3190	7700	7700
			Med	2750	2750	6760	6760	
			Min	2250	2250	5710	5710	
	Water flow rate	l/h	Max	279	279	673	673	
		Med	241	241	591	591		
		Min	196	196	499	499		
	Water pressure drop	kPa	Max	4	4	26	26	
		Med	3	3	21	21		
		Min	2	2	16	16		

GENERAL SIZE UNIT



	2 PIPES				4 PIPES			
	213	216	223	226	413	416	423	426
B	482	482	882	882	482	482	882	882
D	1/2"	1/2"	1/2"	3/4"	1/2"	1/2"	1/2"	3/4"
R	/	/	/	/	1/2"	1/2"	1/2"	1/2"

GENERAL UNIT SIZE WITH SILENCERS

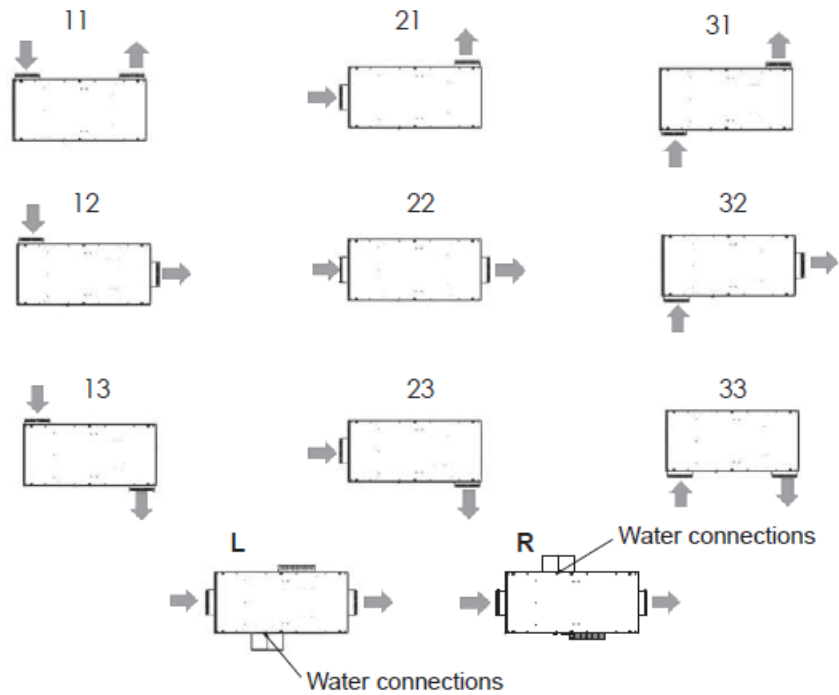


	2 PIPES				4 PIPES			
	213	216	223	226	413	416	423	426
B	482	482	882	882	482	482	882	882
D	1/2"	1/2"	1/2"	3/4"	1/2"	1/2"	1/2"	3/4"
I	300	300	300	300	700	700	700	700
L	455	455	455	455	855	855	855	855
R	/	/	/	/	1/2"	1/2"	1/2"	1/2"

**GUIDELINES**

# Depending on the size constraints of the system and the environment, the ARIA 2 units can be configured with different combinations of hydraulic connections, recovery and exhaust air side. If you do not specify when ordering, the air connections are provided in the front position (22).

**ARIA II - 213 - 216 - 413 - 416**



**ARIA II - 223 - 226 - 423 - 426**

