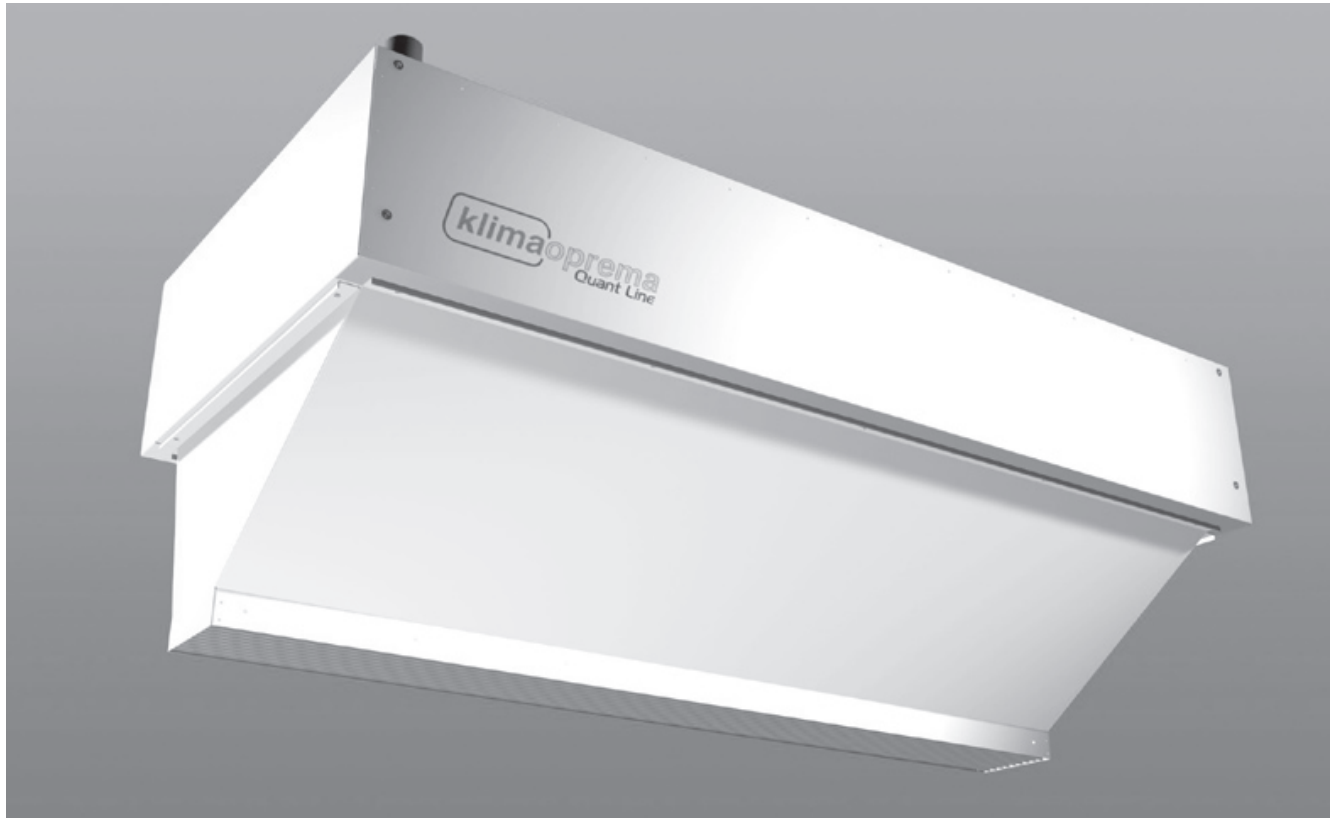


8/S4
v 2.5 (en)



INDUSTIRAL AIR CURTAIN

XS



Application

XS series air curtains are designed for installation at gates for people's and vehicle traffic, mostly in industrial facilities such as plants, warehouses and hangars.

Main characteristics:

- High quality components
- Installed hot water heater (model without a heater at request)
- Horizontal and vertical installation possibility
- Maximum opening width up to 10 m (vertical mutual installation)
- Simple installation, handling and maintenance

Casings are self-supporting and made of galvanized/ powder coated steel sheet in basic RAL 9010 colour (white). Moreover, they are equipped with a jet nozzle.

Heat exchangers are made of Cu/Al with two pipe rows, designed for water as a heating medium up to 100°C and tested at 25 bar.

Fans are constructed axially with a single-phase actuator, installed thermal protection and sealed self.-greasing radial-axial bearings. Control panels are supplied with a triple fan speed controller.

ELECTROTHERMIC DATA

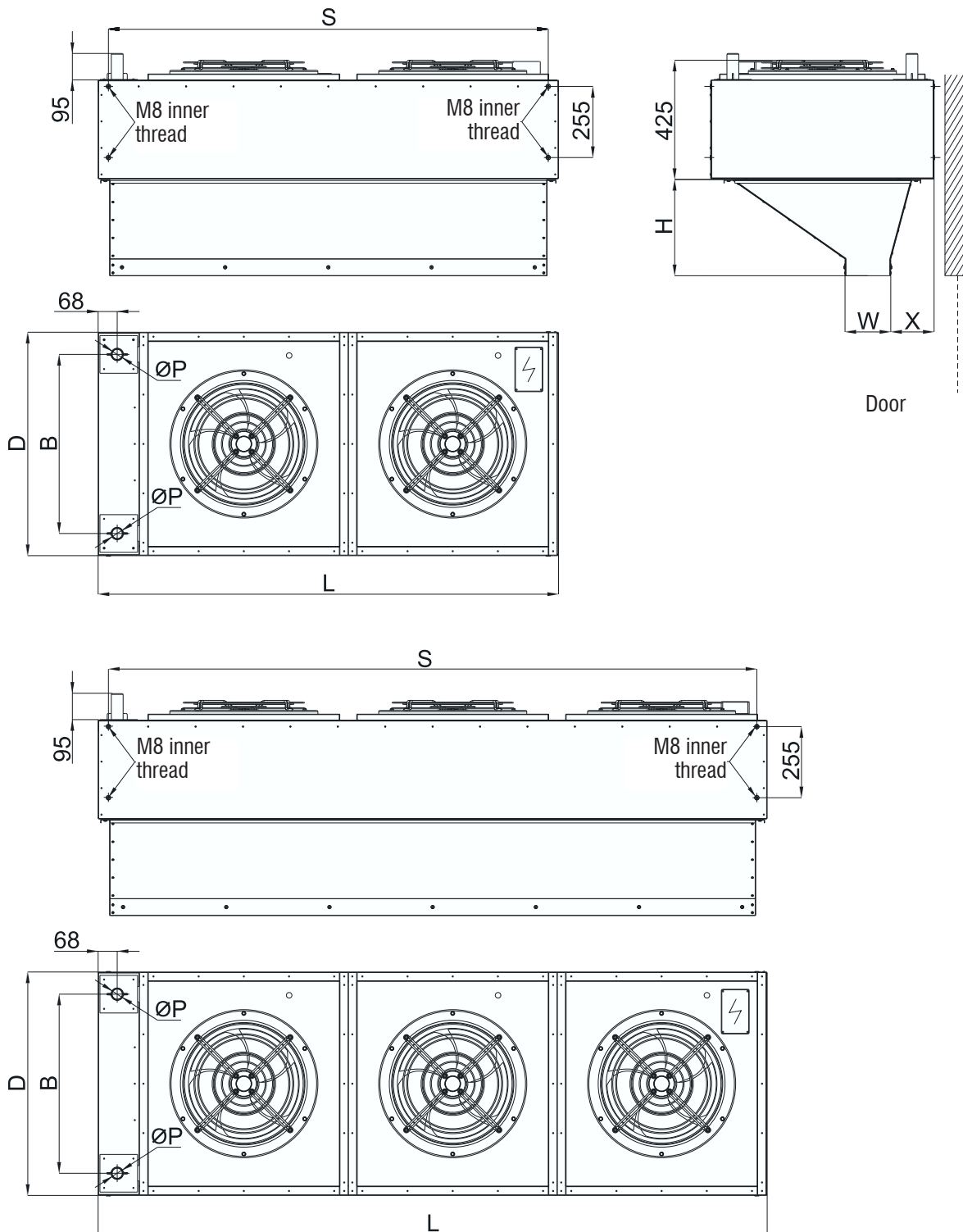
Model		XS2					
No. of fans		2					
Installation height	m	4,0 - 5,0					
Air flow rate	m ³ /h	8500		6300		3000	
Heat output / supply air temperature		Q	t _{zL}	Q	t _{zL}	Q	t _{zL}
		kW	°C	kW	°C	kW	°C
Hot water regime 90/70 °C	t _{UL} = 15°C	78,41	43,10	67,00	46,63	41,87	56,50
	t _{UL} = 20°C	72,10	45,75	61,64	49,00	38,56	58,08
Pressure drop at water side	kPa / m ³ /h	9,71/3,46		7,25/2,95		3,03/1,84	
Hot water regime 80/60 °C	t _{UL} = 15°C	64,76	38,21	55,36	41,14	34,65	49,35
	t _{UL} = 20°C	58,43	40,87	49,94	43,50	31,27	50,90
Pressure drop at water side	kPa / m ³ /h	6,91/2,84		5,17/2,43		2,17/1,52	
Hot water regime 55/45 °C	t _{UL} = 15°C	41,59	29,91	35,51	31,77	22,18	37
	t _{UL} = 20°C	35,17	32,56	30,06	34,15	18,79	38,57
Pressure drop at water side	kPa / m ³ /h	11,44/3,62		8,53/3,09		2,63/1,63	
Nominal revolution rate	min ⁻¹	1350		1015		580	
Rated power	kW	0,56		0,45		0,35	
Rated current	A	2,3		3		3	
Starting current	A	5,8					
Power supply	V / Ph / Hz	230/1/50					
Sound power level	dB (A)	73		69		64	
Water volume	l	7					
Water connections		1 1/4"					
Model		XS3					
No. of fans		3					
Installation height	m	4,0 - 5,0					
Air flow rate	m ³ /h	12500		9300		4500	
Heat output / supply air temperature		Q	t _{zL}	Q	t _{zL}	Q	t _{zL}
		kW	°C	kW	°C	kW	°C
Hot water regime 90/70 °C	t _{UL} = 15°C	116,54	42,73	98,44	46,48	62,13	56,05
	t _{UL} = 20°C	107,07	45,39	90,46	48,83	57,10	57,60
Pressure drop at water side	kPa / m ³ /h	4,32/5,14		3,16/4,34		1,34/2,74	
Hot water regime 80/60 °C	t _{UL} = 15°C	95,72	37,78	80,91	40,88	51,10	48,77
	t _{UL} = 20°C	86,14	40,43	72,818	43,21	46,00	50,30
Pressure drop at water side	kPa / m ³ /h	3,05/4,20		2,23/3,55		0,95/2,24	
Hot water regime 55/45 °C	t _{UL} = 15°C	61,55	29,65	51,96	31,62	32,75	36,65
	t _{UL} = 20°C	51,85	32,30	43,80	33,96	27,59	38,18
Pressure drop at water side	kPa / m ³ /h	5,05/5,36		3,69/4,53		1,57/2,85	
Nominal revolution rate	min ⁻¹	1350		1010		580	
Rated power	kW	0,87		0,7		0,54	
Rated current	A	3,45		4,5		4,5	
Starting current	A	8,7					
Power supply	V / Ph / Hz	230 / 1 / 50					
Sound power level	dB (A)	74		71		65	
Water volume	l	9					
Water connections		1 1/4"					

INDUSTRIAL AIR CURTAIN - XS

Model		XS4					
No. of fans		2					
Installation height	m	5,0 - 6,0					
Air flow rate	m ³ /h	15400		12400		9500	
Heat output / supply air temperature		Q	t _{ZL}	Q	t _{ZL}	Q	t _{ZL}
		kW	°C	kW	°C	kW	°C
Hot water regime 90/70 °C	t _{UL} = 15°C	126,84	39,50	112,94	42,09	97,107	45,40
	t _{UL} = 20°C	116,31	42,39	103,53	44,75	89,00	47,77
Pressure drop at water side	kPa / m ³ /h	3,10 / 5,59		2,49 / 4,98		1,88 / 4,28	
Hot water regime 80/60 °C	t _{UL} = 15°C	103,53	35,00	92,183	37,14	79,30	39,83
	t _{UL} = 20°C	92,82	37,87	82,67	39,76	71,14	42,20
Pressure drop at water side	kPa / m ³ /h	2,63 / 5,13		1,73 / 4,05		1,31 / 3,48	
Hot water regime 55/45 °C	t _{UL} = 15°C	66,71	27,89	59,37	29,24	51,02	30,97
	t _{UL} = 20°C	55,90	30,76	49,72	31,89	42,74	33,34
Pressure drop at water side	kPa / m ³ /h	3,58 / 5,81		2,88 / 5,175		2,17 / 4,44	
Nominal revolution rate	min ⁻¹	1255		1020		810	
Rated power	kW	1,40		0,98		0,70	
Rated current	A	6,2		6,4		5,6	
Starting current	A	14,8					
Power supply	V / Ph / Hz	230 / 1 / 50					
Sound power level	dB (A)	74		70		65	
Water volume	l	10					
Water connections		2"					





Model		XS5					
No. of fans		3					
Installation height	m	5,0 - 6,0					
Air flow rate	m ³ /h	23100		18900		14000	
Heat output / supply air temperature		Q	t _{ZL}	Q	t _{ZL}	Q	t _{ZL}
		kW	°C	kW	°C	kW	°C
Hot water regime 90/70 °C	t _{UL} = 15°C	199,98	40,75	179,42	43,23	151,06	47,09
	t _{UL} = 20°C	183,91	43,6	164,98	45,87	138,94	49,41
Pressure drop at water side	kPa / m ³ /h	9,18 / 8,82		7,51 / 7,91		5,45 / 6,67	
Hot water regime 80/60 °C	t _{UL} = 15°C	165,01	36,25	148,04	38,30	124,63	41,48
	t _{UL} = 20°C	148,82	39,1	133,43	40,93	112,47	43,81
Pressure drop at water side	kPa / m ³ /h	6,54 / 7,25		5,36 / 6,50		3,90 / 5,47	
Hot water regime 55/45 °C	t _{UL} = 15°C	106,05	28,66	95,09	29,97	80,04	32,00
	t _{UL} = 20°C	89,66	31,51	80,37	32,61	67,68	34,33
Pressure drop at water side	kPa / m ³ /h	10,84 / 9,24		8,87 / 8,29		6,46 /	
Nominal revolution rate	min ⁻¹	1250		1050		820	
Rated power	kW	2,16		1,44		1,05	
Rated current	A	9		9,3		8,4	
Starting current	A	22,2					
Power supply	V / Ph / Hz	230 / 1 / 50					
Sound power level	dB (A)	75		71		66	
Water volume	l	17					
Water connections		2"					

DIMENSION

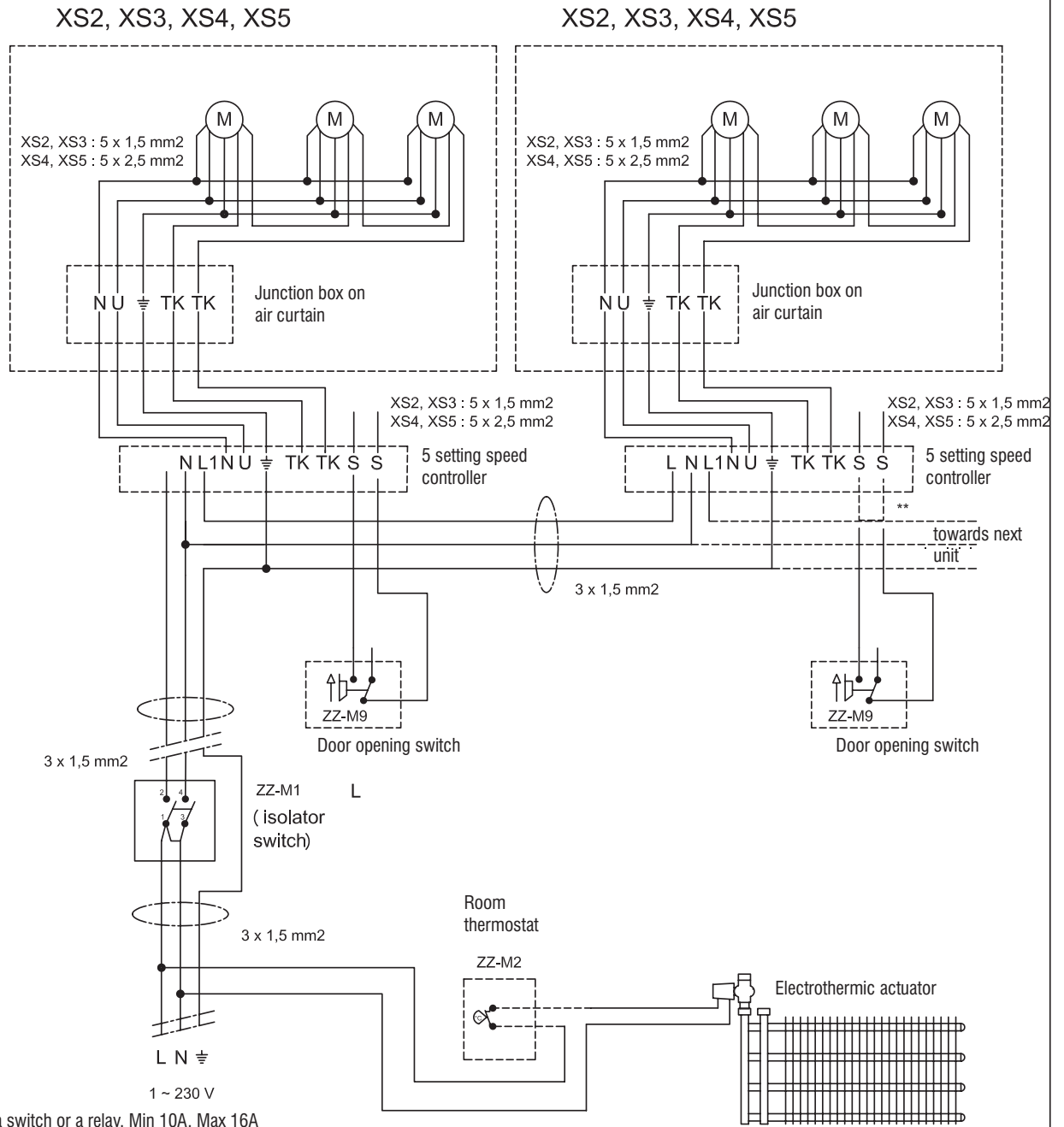


Model	No. of fans	L	D	H	B	S	W	X	$\varnothing P$	Mass [kg]
XS2	2	1650	800	345	642	1577	165	155	1 1/4"	125
XS3	3	2400	800	345	642	2325	165	155	1 1/4"	160
XS4	2	1987	929	395	770	1913	205	170	2"	170
XS5	3	2904	929	395	770	2830	205	170	2"	240

ACCESORIES

Code	Name	Figure / Description
ZZ - X1	Speed controller	
ZZ - M2	Room thermostat RAB11	
ZZ - M9	Door opening switch	
ZZ - XX	5 setting speed controller	

WIRING SCHEME



* install a switch or a relay, Min 10A, Max 16A
 **If door opening switch is not used, create a jumper